

Stage Pro
Presidential
User Manual

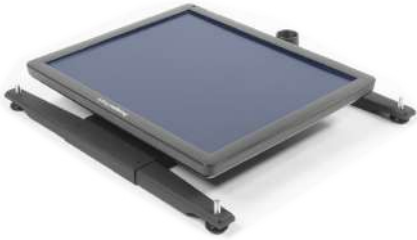
www.prompterpeople.com



Prompter People™

Set-Up Guide - ProLine StagePro PG.1

1



Attached monitor to the base

2

Screw the pole into the base
For Carbon Fiber Poles Skip to page 2



3



Attached clamp to stand and secure
by turning the thumb screw

4



Slide the glass into the clamp.

5



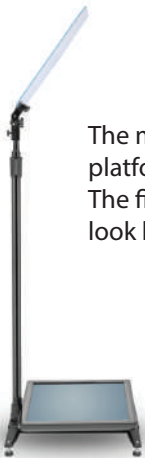
Tighten the thumb screws to secure
the glass in the clamp.

6



You can adjust the angle of the glass to
best match the readers height.
The thumb screw will tilt the glass to
the correct angle required.

7



The monitor sits on the
platform near the ground.
The final assembly should
look like this.

8

Included Attachment



Attach the skirt around the monitor
if desired.

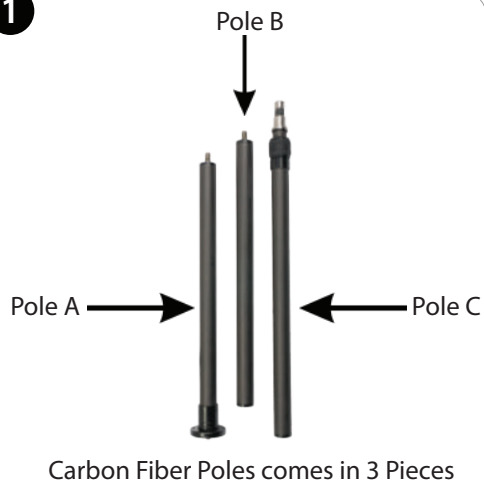
9



Adjust the height of the glass for the
best view for the reader.

Set-Up Guide - ProLine StagePro PG.2

1



2

Screw the pole A into the base



3

Screw pole B into pole A



4

Screw pole C into pole B



5

For shorter speakers screw pole C directly into pole A (Removing pole B)



6



Return to Page 1 Step 3 and attach the beamsplitter clamp to the top of pole C