

# ROBO

## User Manual

[www.prompterpeople.com](http://www.prompterpeople.com)



# Prompter People™

# ROBO

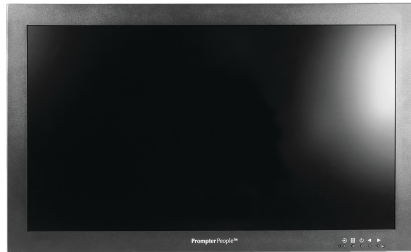
## In the Box

Regular Auto-Reversing Monitor



or

Highbright Auto-Reversing Monitor



Tripod Adapter Plate



Monitor  
VESA Plate

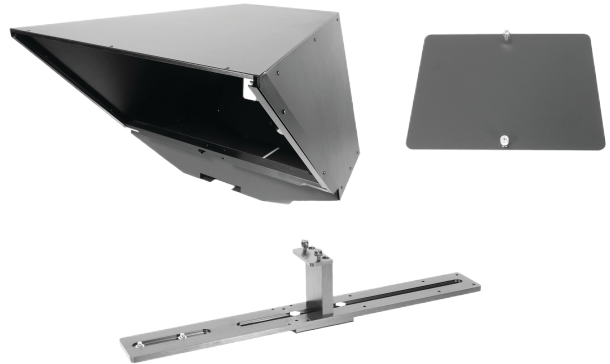
Wireless - Remote



24 Inch Glass



Hood + Back Plate + SLED



2 x 3 Inch Riser  
Block and Sled



Flip-Q USB Dongle

2 x Camera Mount Screw & Adapter



# Robo

---

## Quick Setup Guide

1



Tripod Adapter Plate comes attached to the sled, but the screws can be loosened with a flat head screwdriver or quarter and the plate can move across the base of the Robo Sled to achieve the best balance.

2



When the Tripod Adapter Plate is positioned for optimal balance, securely tighten the screws with a flat head screwdriver or quarter. You can attach your tripod plate to either the front or back adapter plate or both if necessary.

3



Attach your Robo sled to your Tripod or Pedestal.

4

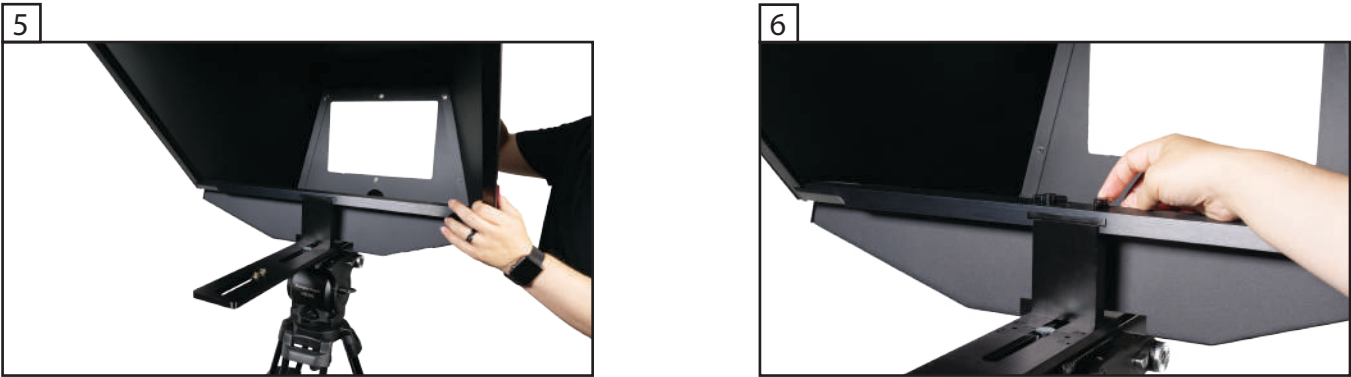


Remove the screws on the front sled where the Hood Slides into place. Place the screws to the side in a safe place you will need these to attach your Hood.

# Robo

---

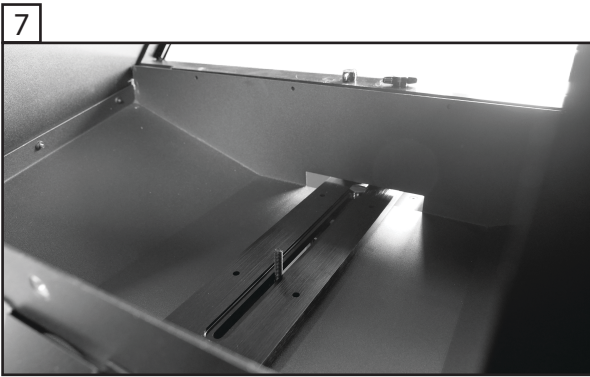
## Quick Setup Guide



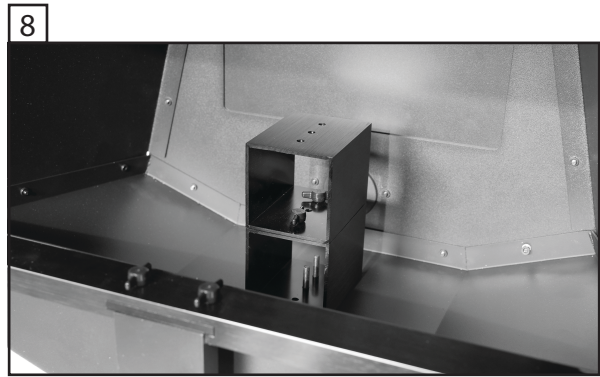
Remove the back plate of the Robo Hood.  
Push the Robo Hood into place so that the holes line up with the female screw holes on the Sled.



Once the Hood is lined up properly grab the two screws you set aside, and screw them into place securely, do not over-tighten but tighten them by hand securely.



Add one of the washers and screws into place from the underside of the Robo sled (Interior of the Hood).  
\*Newer models of the Robo can have the sled on the exterior and not running through the inside of the Robo hood.



Add the two Robo 3 inch blocks to your Robo Sled. See step 9 for adding the 2 screws and washers to secure the riser blocks into place.



# Robo

---

## Quick Setup Guide

9



Add the 2 screws and washers to your two riser blocks. Use a Phillips head screw driver to securely tighten in the screws on the underside of the sled.

10



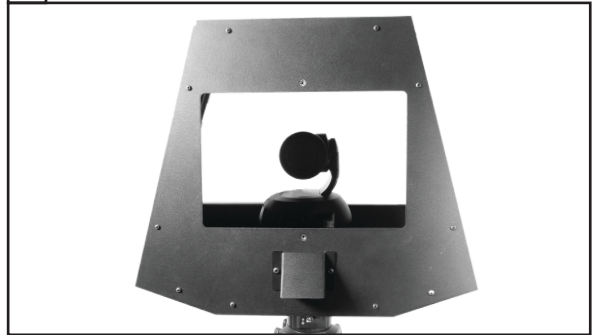
Add the two thumb screws to secure your sled into place on the two 3" riser blocks. You can slide the sled back and forward to move your PTZ camera to the optimal position as close to the glass as possible.

11



Attach your PTZ System to the sled using the thumb screw. You may need additional / optional one inch or half inch blocks, make sure your camera is vertically and horizontally centered to your beam splitter glass (But leave room for your PTZ or Robotic camera to pan or tilt 35° left or 35° right).

12



Use the Cable spout in the back to run the cables for your PTZ or Robotic camera. You can do this after your Robo is fully setup before you place on your back panel.

# Robo

---

## Quick Setup Guide

13



Robo Monitor Vesa Mount comes Assembled, but adjustments for positioning can be made using a Phillips head screwdriver and repositioning the VESA plate and screwing in the 4 screws. If you want to use your own monitor you can add our VESA Plate to your monitor.

14



Position the Monitor to reflect correctly, so the entire screen of the monitor is reflected in the glass. Use the thumbscrews to secure the monitor into place.

15



16



Robo Properly assembled.

Carefully unwrap your glass and slide it into your hood. The beamsplitter glass needs to go in with the felt side down, make sure you slide it into place level and facing out so that the plastic handle is at the top. If you are unsure which side is correct you can hold your finger nail to the glass (Without scratching it) if you do not see a gap between your fingernail and it's reflection, that is the side of the glass that should be facing your talent. If you do see a gap, that side of the glass should be facing the camera's lens.